

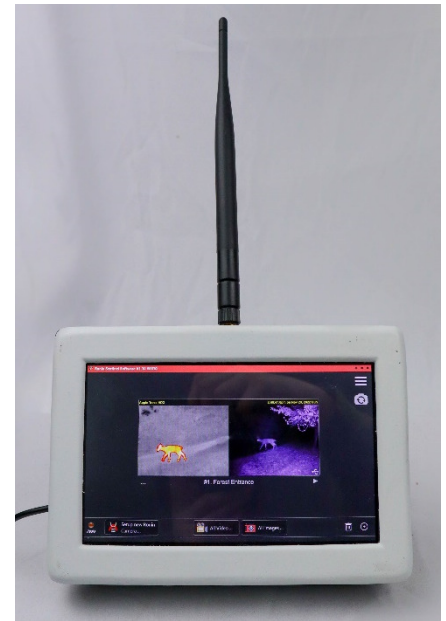
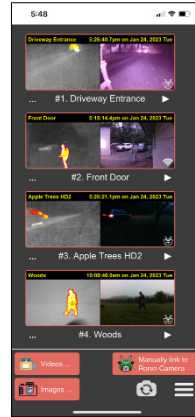


Ronin Sentinel – Specification

The Ronin Sentinel is a desktop, wall mounted, or portable central base station to coordinate the activity from up nine connected Ronin Cameras. Users can setup new cameras, view a live image, download saved images or videos, and control their Ronin Cameras using Radio, WiFi, or a USB link. The Sentinel handles all incoming alert messages from cameras and forwards them out for free by email and text to specified phones or other devices.

The Sentinel also acts as a central server for the Ronin Camera Link app. As long as you are on the same network as the Sentinel, this free app allows your Android or iOS device, Windows PC, or Mac to view the connected cameras and communicate with them through the Sentinel even when camera is linked by Radio and many miles away.

The Ronin Camera Link app also manages the images and videos stored on the Sentinel or directly downloaded to your device from an SD card. Users can save images or videos in various formats including the ability to create point-by-point temperature maps from FLIR images or videos.



Users typically install the Ronin Sentinel permanently to a wall or set it on a desk in a location with network access. However, it can also function as a mobile device where it is brought within radio range to one or more cameras and 12V is connected from a car or battery pack. The Sentinel wakes up and then immediately searches for available cameras. When a camera is found, a simple button push allows for downloading of the captured images or videos completely eliminating the need to disturb the blind, stand, or other location after the initial camera placement.

General Specifications:

- Built in LCD Display with Touchscreen
- 4GB RAM/64GB storage
- 64-bit Windows 10 Enterprise
- WiFi 802.11n
- 100Mbps Ethernet Connection
- HDMI port for connection to external monitor or TV
- Can post camera GPS locations to increase security.
- Portable, wall mounted, or desktop placed
- 12V powered from wall adapter, car power adapter, or from Sentinel battery pack
- 6 Month Warranty
- Designed and built in U.S.A.!

Linking to Ronin Cameras Specs:

- Up to 9 cameras can be linked using any combination of Radio, WiFi, or USB
- Sends free text and/or email alerts received from cameras for:
 - + Motion with the captured image or video from the detection
 - + Low Battery
 - + Lost Link
- Live view any camera at any time and download any saved image or video
- Adjust camera parameters remotely
- Screen displays camera status including active downloading, newly received image or video, current app connection, and camera configuration
- Built in Clock/Calendar screen saver that automatically disappears when new alerts occur

Radio Specifications:

- Supports wide range of antennas to allow for greater distance
- U.S.A, Canada, South America, and Australia certified modules
- Camera range up to 9 miles in most conditions. Longer ranges possible depending on line of sight, obstacles, and antenna type. Contact us for more details
- Three speeds (High, Medium, Low) to accommodate different distance challenges
- SMA standard connector for Radio Antenna to allow for cable to external roof mount antenna

Ronin Camera Link Server:

- Sentinel can support multiple simultaneous app users
- App allows for all the same functions as from the Sentinel control panel. Users can live view, change camera settings, and view/modify images and video directly from app
- Available for Android, iOS, Mac, and Windows



Diamond Edge Technology, LLC
90164 Shore Lane
Eugene, OR 97402

www.ronincamera.com
ryan@detllc.com

(541) 780-6869 (ext 3#)