

ICS#022303-1: Maximizing Memory For TrafMan Under Windows XP

Windows XP uses a different approach to handling memory configuration for MS-DOS programs. Each program can have its own specific AUTOEXEC.BAT and/or CONFIG.SYS file that are used whenever the program is run by clicking on its shortcut.

To insure that TrafMan has the maximum amount of memory available to it, please follow the instructions listed below. Note that it has been assumed that you have already installed and are familiar with basic TrafMan operation.

1. Make sure no programs (including TrafMan) are running.
2. Using Notepad (or any simple text editor) create a new file in your \TRAFMAN directory named CONFIG.TRF. Place the following text into this file:

```
device=c:\windows\system32\himem.sys
dos=high,umb
files=50
```

3. Save the CONFIG.TRF file and then create another new file in your \TRAFMAN directory named AUTOEXEC.TRF. Place the following text into this file:

```
@ECHO OFF

REM Install CD ROM extensions
LH %SystemRoot%\SYSTEM32\MSCDEXNT.EXE

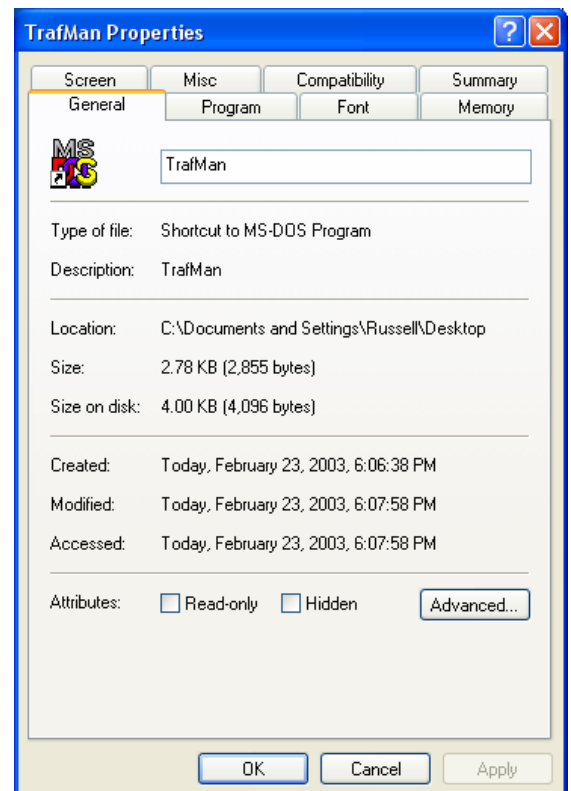
REM Install network redirector
LH %SystemRoot%\SYSTEM32\REDIR
```

4. Save this file and exit out of your text editor.

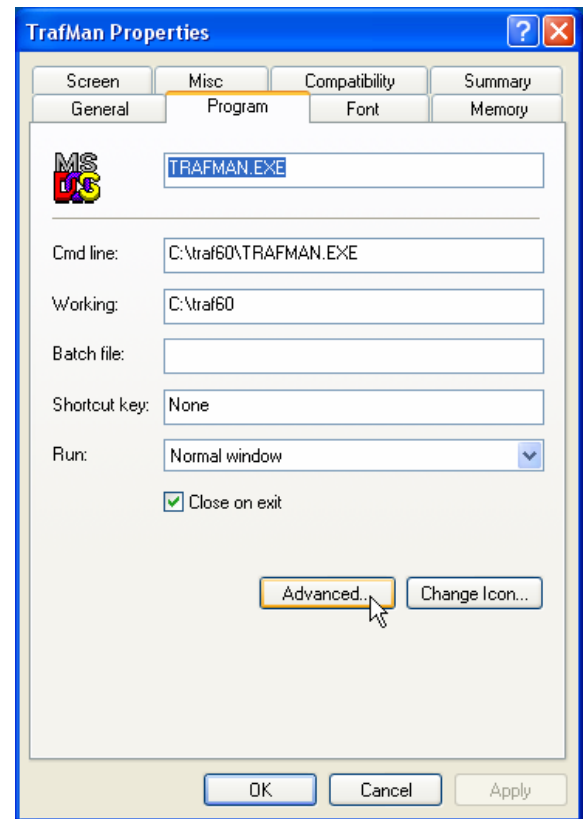
5. Right click the desktop shortcut for TrafMan and select Properties. Note that if you launch TrafMan from the start menu you will have to also make these same changes to that shortcut too.

You should see a window similar to the following (your path for TrafMan will probably be C:\TRAFMAN instead of C:\TRAF60. Please use your path where you see \TRAF60).

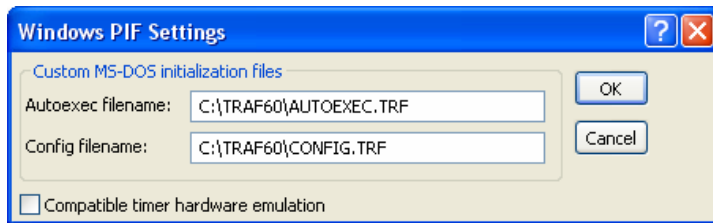
Click on the *Program* tab.



6. You should be seeing a window similar to this window:
Click on the *Advanced* button.



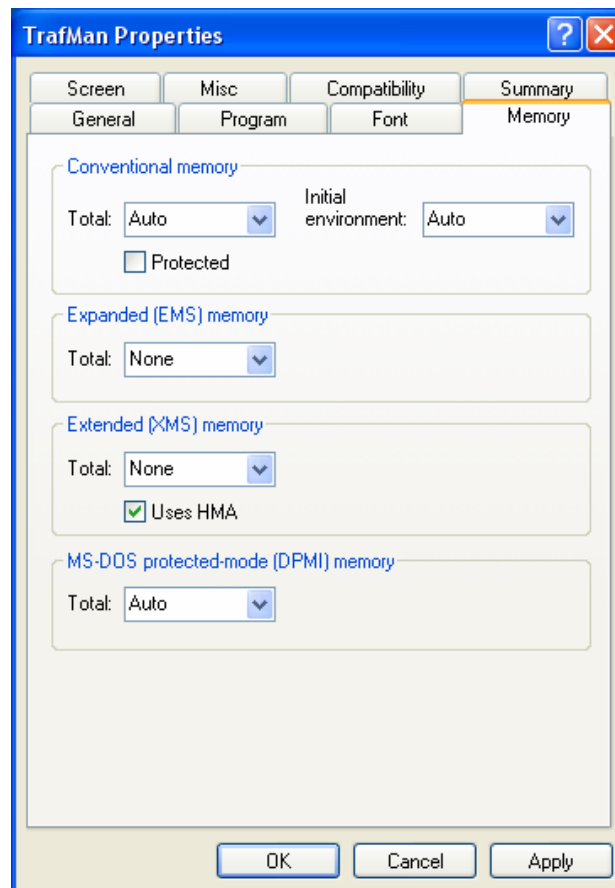
7. The window shown below should appear:



Change the Autoexec filename and the Config filename to be the new files you created. When done, click ok.

Note that you will probably use "C:\TRAFMAN" instead of the "C:\TRAF60" shown above (depending on where TrafMan was installed).

8. Finally, click on the Memory tab and make sure your memory settings are the same as shown in this window:



When you are finished, click Ok to save the changes and then double click TrafMan. When you get to the main menu, press <Alt+M>. Your computer will probably vary some from the numbers shown below, but you should have at least 105,000 bytes of free memory available.

```
[ ] Memory Status
Free Memory : 118,144 Bytes
Stack Size  : 48,016 Bytes
Maximum Files: 50
Original Free: 173,360 Bytes
Overlay Size : 114,688 Bytes
Ext. Result  : -1
IRD V6.00 ([#0006] 02/23/03)
```

By: *Russell Taylor*
Diamond Edge Technology, LLC
545 High Street
Eugene, OR 97401
russell@detllc.com